

Whisler Ridge Homeowners Association

Date: November 8, 2021

To: Whisler Ridge Community

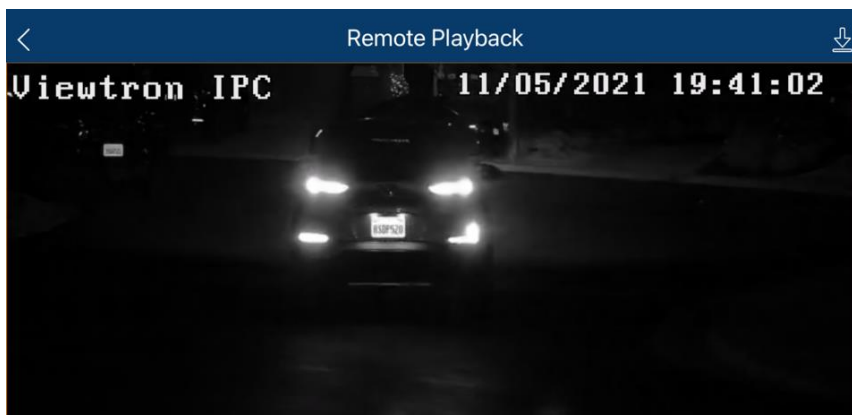
From: Whisler Ridge Board of Directors

Subject: **Status of Whisler Ridge Security Measures**

Dear Homeowners:

We provide this memo to update you on the status of security measures in the Community.

This past week, a LPR camera was installed by a resident at the corner of Whisler Ridge Drive and Willow Way. The camera was calibrated and tested and, both day and night, successfully captures license plate images and videos of vehicles entering and exiting Willow Way east of our entry. See example frame shot below of nighttime video.



The LPR camera captures license plate images even if vehicles are moving fast and captures both front and rear license plates. See AI capture of the above license plate:



In addition, an overview HD camera was installed by a resident to capture vehicles and persons entering Whisler Ridge at our entrance. Another overview HD camera was installed to capture traffic and persons entering Cedarwood Court.

The combination these cameras should provide our Community with substantially increased ability to capture trespassers and, in particular, identify the trash bin bandit should he return.

The Board will also soon install an additional sign warning of "Video Surveillance" on the Edison light pole at our entry.

The Board will evaluate the need for enhanced security on a continuing basis. Residents may wish to attend the November 15 Board meeting to express their views or may submit comments at any time to our manager at ssarte@actionlife.com.